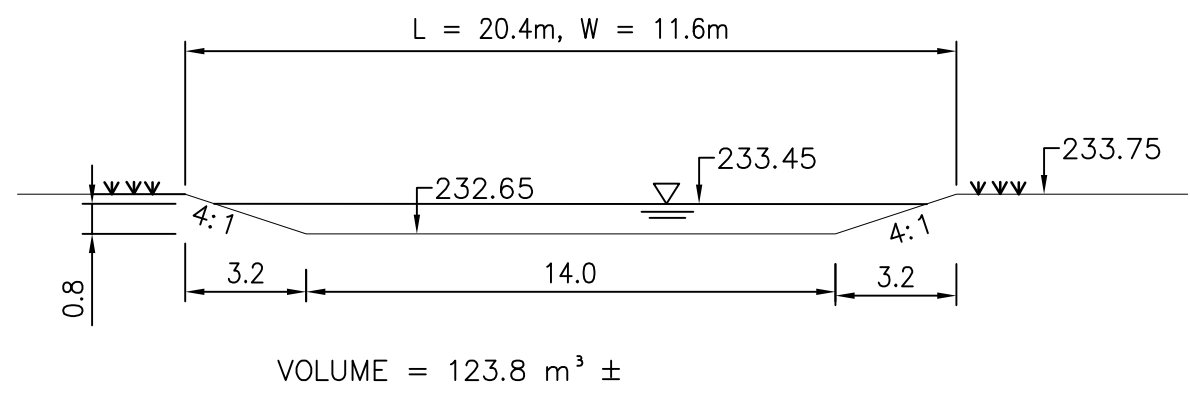


SEDIMENT CONTROL MEASURES

1. PROTECT ALL EXPOSED SURFACES AND CONTROL ALL RUNOFF DURING CONSTRUCTION.
2. ALL EROSION CONTROL MEASURES TO BE IN PLACE BEFORE STARTING CONSTRUCTION AND REMAIN IN PLACE UNTIL RESTORATION IS COMPLETED.
3. MAINTAIN EROSION CONTROL MEASURES DURING CONSTRUCTION.
4. ALL COLLECTED SEDIMENT TO BE DISPOSED OF AT AN APPROVED LOCATION.
5. MINIMIZE AREA DISTURBED DURING CONSTRUCTION.
6. ALL DEWATERING TO BE DISPOSED OF IN AN APPROVED SEDIMENTATION BASIN.
7. PROTECT ALL CATCH BASINS, MANHOLES AND PIPE ENDS FROM SEDIMENT INTRUSION WITH GEOTEXTILE (TERRAFIX 270 R).
8. KEEP ALL SLUMPS CLEAN DURING CONSTRUCTION.
9. PREVENT WIND-BLOWN DUST.
10. STRAW BALES TO BE USED IN LOCALIZED AREAS AS DIRECTED BY THE ENGINEER DURING CONSTRUCTION FOR WORKS WHICH ARE IN OR ADJACENT TO FLOOD LINES, FILL LINES AND HAZARDOUS SLOPES.
11. STRAW BALES TO BE TERMINATED BY ROUNDING BALES TO CONTAIN AND FILTER RUNOFF.
12. OBTAIN APPROVAL FROM CITY OF WINNIPEG PRIOR TO CONSTRUCTION FOR WORKS WHICH ARE IN, OR ADJACENT TO FLOOD LINES, FILL LINES AND HAZARDOUS SLOPES.
13. ALL SILT FENCING AND DETAILS ARE AT THE MINIMUM TO BE CONSTRUCTED IN ACCORDANCE WITH THE MINISTRY OF NATURAL RESOURCES GUIDELINES ON EROSION AND SEDIMENT CONTROL FOR URBAN CONSTRUCTION SITES.
14. ALL OF THE ABOVE NOTES AND ANY SEDIMENT & EROSION CONTROL MEASURES ARE AT THE MINIMUM TO BE IN ACCORDANCE WITH THE MINISTRY OF NATURAL RESOURCES GUIDELINES ON EROSION AND SEDIMENT CONTROL FOR URBAN CONSTRUCTION SITES.



POND DETAIL

SCALE 1:250

STORM WATER MANAGEMENT

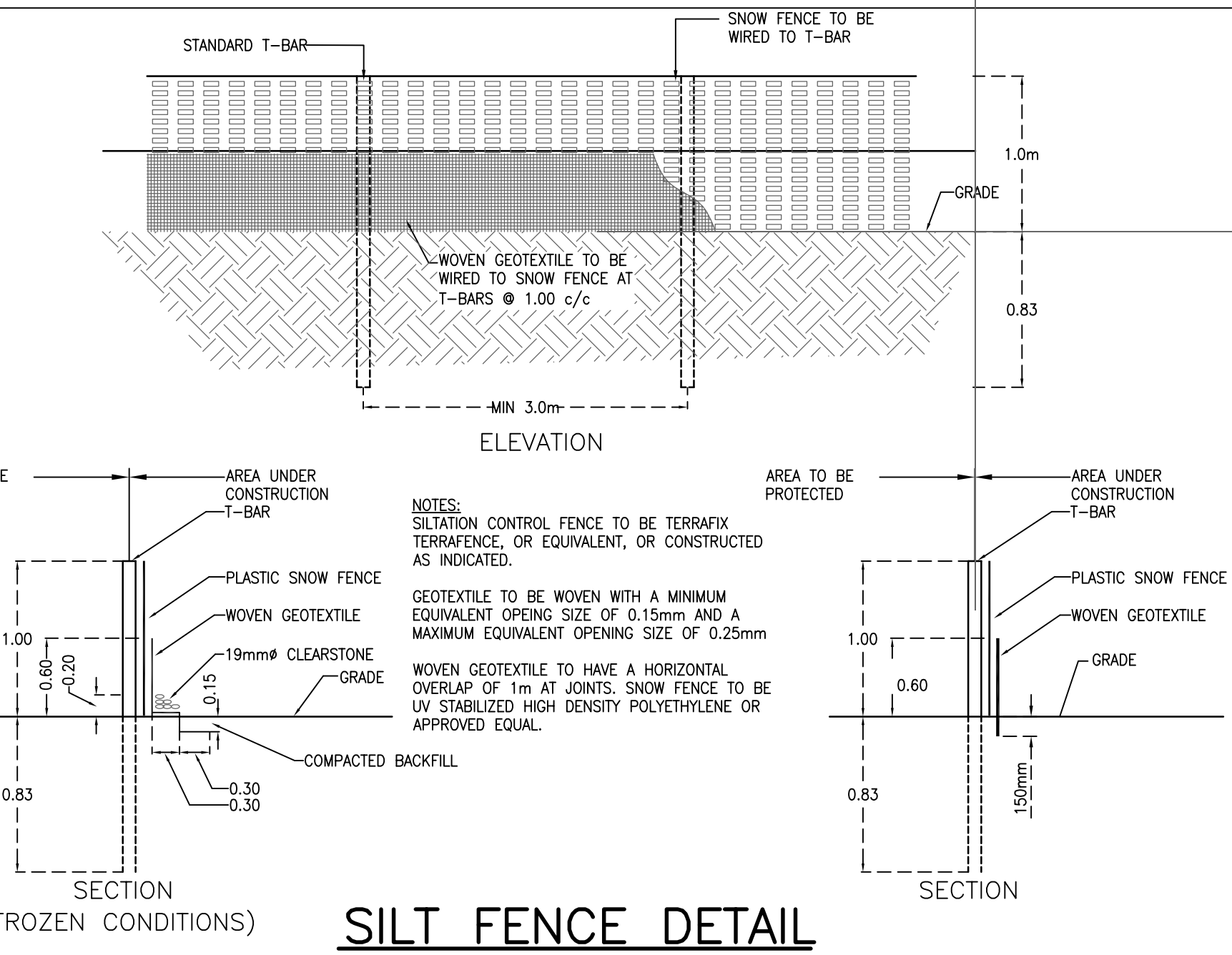
PRE-DEVELOPMENT AREAS:
 TOTAL AREA OF SITE = 4969 m²
 TOTAL AREA OF BUILDINGS = 0 m² (0%)
 TOTAL AREA OF ASPHALT/CONCRETE/PARKING AREAS (HARD SURFACE) = 0 m² (0%)
 TOTAL AREA OF LANDSCAPING = 4969 m² (100%)

POST-DEVELOPMENT AREAS:
 TOTAL AREA OF SITE = 4969 m²
 TOTAL AREA OF BUILDINGS = 690 m²
 TOTAL AREA OF ASPHALT/CONCRETE/PARKING AREAS (HARD SURFACE) = 1694 m²
 TOTAL AREA OF LANDSCAPING = 2585 m²

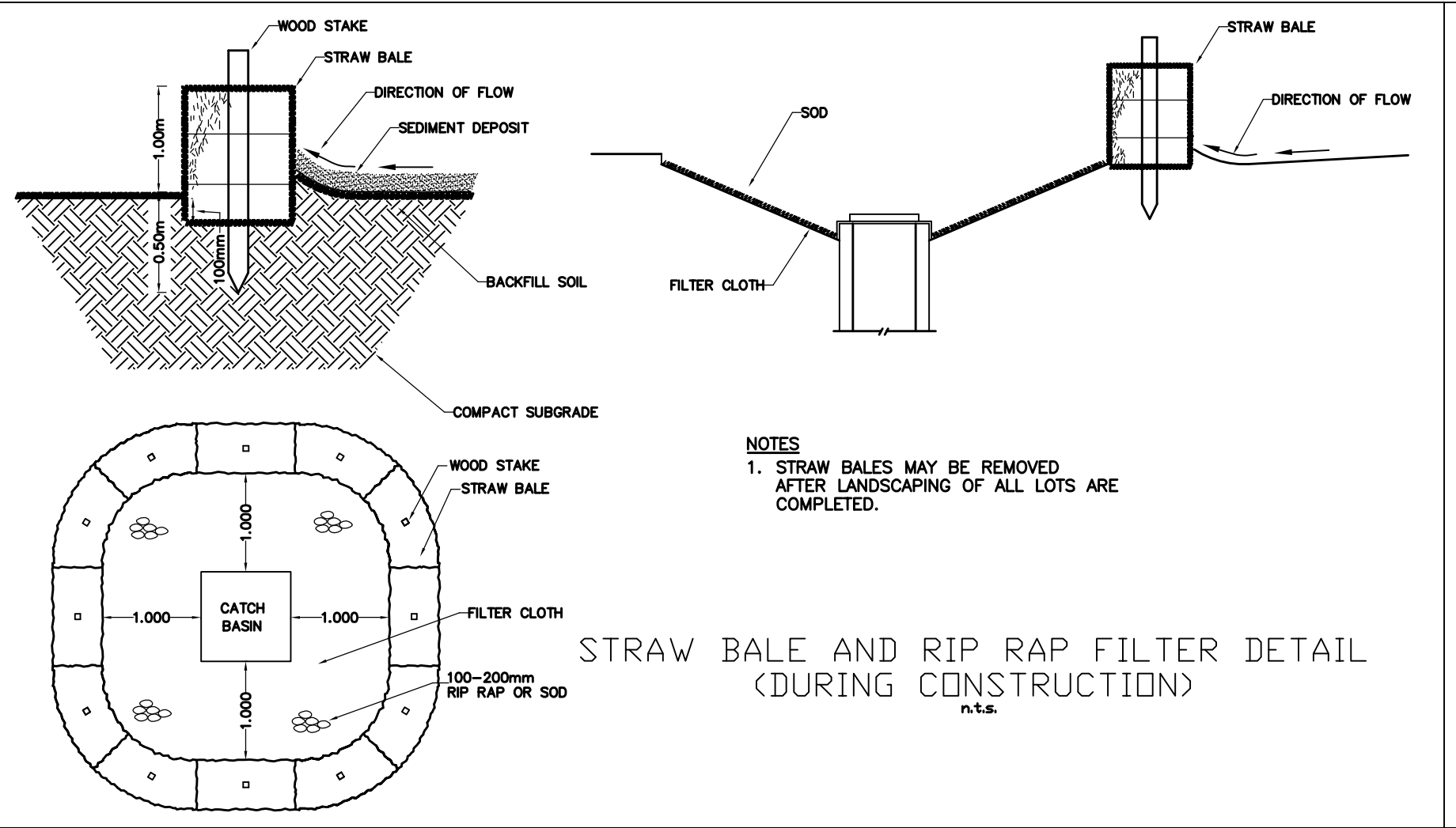
LOT GRADING CERTIFICATE

I HEREBY CERTIFY THAT THE PROPOSED GRADING AND APPURTENANT DRAINAGE WORKS COMPLY WITH SOUND ENGINEERING DESIGN AND THAT THE PROPOSED GRADING IS IN GENERAL CONFORMITY FOR DRAINAGE AND RELATIVE ELEVATIONS, WITH THE ADJACENT PROPERTIES.

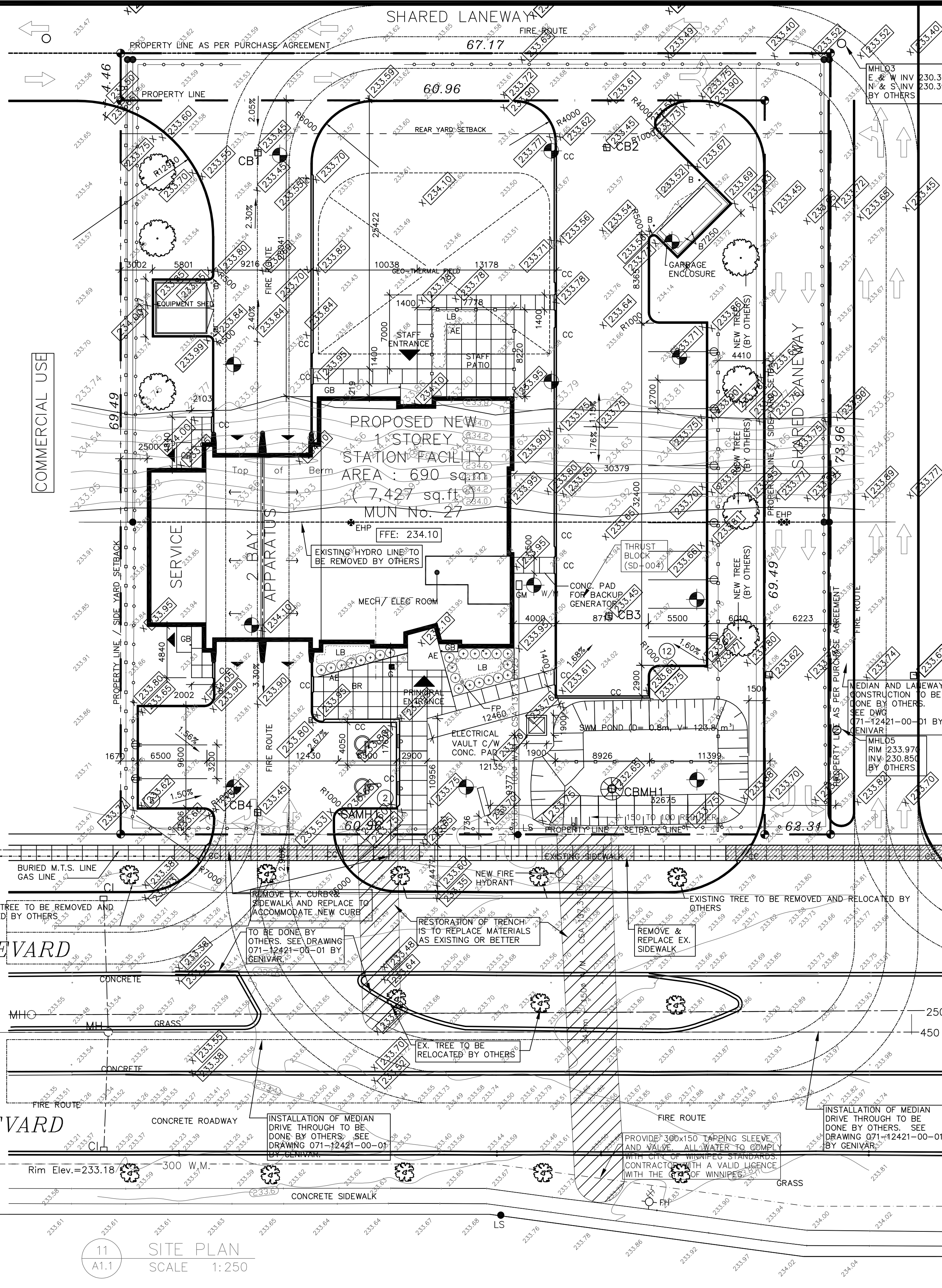
R. C. STEVENSON, P.ENG.



SILT FENCE DETAIL



STRAW BALE AND RIP RAP FILTER DETAIL (DURING CONSTRUCTION)



11 SITE PLAN SCALE 1:250

LEGEND

- | | | | |
|-------------------------------------------------------------------------------------------------------------------------------------------------------------------------------------------------------------------------------------------------------------------------------------------------------------------------------------|----------------------------------------------------------------------------------------------------------------------------------------------------------------------------------------------------------------------------------------------------------------------------------------------------------------------------------------------------------------------------------------------------------|----------------------------------------------------------------------------------------------------------------------------------------------------------------------------------------------------------------------------------------------------------------|------------------------------------------------------------------------------------------------------------------------------------------------------------------------------------------------------------------------------------------------------------------------------------------------------------------------------------------------------------------------------------------------------------------|
| <ul style="list-style-type: none"> EXISTING SPOT ELEVATION EXISTING SPOT ELEVATION TO REMAIN PROPOSED SPOT ELEVATION EXISTING CATCHBASIN PROPOSED CATCHBASIN EXISTING MANHOLE PROPOSED MANHOLE PROPOSED OVERLAND FLOW EXISTING OVERLAND FLOW | <ul style="list-style-type: none"> ALUMINIUM EDGING STEEL BOLLARD BIKE RACK CATCH BASIN CURB CUT EXISTING HYDRO POLE EXTERIOR LIGHT FIXTURE FIRE ROUTE SIGN FLAG POLE GARBAGE CAN GAS METER GRAVEL BED GROUND SIGN BARRIER-FREE PARKING SIGN NEW HYDRO POLE | <ul style="list-style-type: none"> LANDSCAPE BED NOT IN CONTRACT REVERSE NEW CONCRETE SIDEWALK C/W CONTROL JOINTS @ 1220 / 1524 mm O.C. SIAMSE CONNECTION (NOT CONNECTED) SIMILAR TYPICAL | <ul style="list-style-type: none"> DIRECTION OF SLOPE NEW TREE EXISTING TREE TO REMAIN 6' HIGH CEDAR WOOD POST FENCE 5' HIGH STAKED ORANGE CONSTRUCTION FENCE @ 6' O.C. C/W TIE WIRE ON TOP PROPERTY LINE VEHICLE PLUG-IN RECEPTACLE (REFER TO ELECTRICAL) PROVIDE 75mm THICK RIGID POLYSTYRENE INSULATION OVER PIPE AS PER SD-018 |
|-------------------------------------------------------------------------------------------------------------------------------------------------------------------------------------------------------------------------------------------------------------------------------------------------------------------------------------|----------------------------------------------------------------------------------------------------------------------------------------------------------------------------------------------------------------------------------------------------------------------------------------------------------------------------------------------------------------------------------------------------------|----------------------------------------------------------------------------------------------------------------------------------------------------------------------------------------------------------------------------------------------------------------|------------------------------------------------------------------------------------------------------------------------------------------------------------------------------------------------------------------------------------------------------------------------------------------------------------------------------------------------------------------------------------------------------------------|

ISSUES: 1 23 SEPT 10 BUILDING PERMIT APPLICATION 2 28 NOV 10 COMPATIBILITY WITH GENIVAR 3 29 DEC 10 CITY OF WINNIPEG COMMENTS	
KEY PLAN N.T.S.	
© COPYRIGHT MURPHY & MURPHY ARCHITECT 2009 NOT TO BE REPRODUCED WITHOUT CONSENT OF ARCHITECT.	
ENGINEER'S STAMP: ARCHITECT'S STAMP:	
Certificate of Authorization Stevenson Engineering Limited No. 4851 Date: 23 Sept 2010	
MURPHY & MURPHY ARCHITECT INC. 775 WATERLOO STREET, LONDON, ONTARIO N6A 3W5 PH: (519) 433-5161 FAX: (519) 433-5161	
A. Detail Number B. Drawing Number - Where Detail Found	
CONTRACTOR SHALL CHECK ALL DIMENSIONS ON THE DRAWINGS AND REPORT ANY DISCREPANCIES TO THE ARCHITECT BEFORE PROCEEDING. ALL DRAWINGS AND SPECIFICATIONS ARE PROPERTY OF THE ARCHITECT AND MUST BE RETURNED AT THE COMPLETION OF THE WORK. DRAWINGS ARE NOT TO BE SCALED. USE ONLY THE LATEST REVISED DRAWINGS OR THOSE THAT ARE MARKED 'ISSUED FOR CONSTRUCTION'. ANY UNAUTHORIZED USE IS PROHIBITED. AREA CALCULATIONS ARE APPROXIMATE.	
PROJECT NAME: NEW WINNIPEG STATION No. 27 PROJECT SAGE CREEK, WINNIPEG, MANITOBA	
DRAWING TITLE: LOT GRADING PLAN AND STORM WATER MANAGEMENT	
PROJECT NORTH: 	STAMP:
SCALE: AS NOTED	PROJECT NO.: 2261
DATE: MARCH 2010	FILE NAME:
ISSUED: MAY 21, 2010	DRAWING NO.: LG-1
DRAWN BY: JES	CHECKED BY: RCS